



MAGNETIC BASE STANDARD TYPE



Can be used with a lug back dial gauge

USE

- Measurements that require a dial gauge or dial indicator to be held in fixed position

MATERIAL

- Body: Rolled steel for general structure
- Magnet: Ferrite

FEATURES

- Standard type
- Removable with ON/OFF lever operation

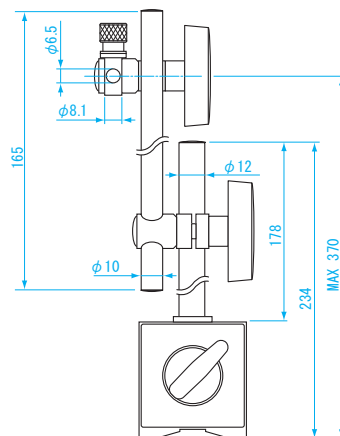
SPECIFICATIONS

- Magnetic adsorption: **approx. 800N**
- Stem holder: $\phi 6\text{mm} \cdot \phi 8\text{mm}$
- Lug back holder: $\phi 6.5\text{mm} \cdot \phi 8\text{mm}$
- Main post screw: M8×P1.25

Parts for Magnetic Base⇒P270



● DIMENSIONS Units : mm



P366 Magnet Types and Characteristics

| Order No. | Model No. | Base Dimension (mm) | Surface magnetic flux density (mT) | Weight |
|-----------|-----------|---------------------|------------------------------------|--------|
| 012870 | SB-6C | 50×60×55 | Max. 100 | 1.5kg |

MAGNETIC BASE FINE ADJUSTMENT TYPE



Can be used with a lug back dial gauge

USE

- Measurements that require a dial gauge or dial indicator to be held in fixed position

MATERIAL

- Body: Rolled steel for general structure
- Magnet: Ferrite

FEATURES

- Fine adjustment type (2mm adj. range)
- Removable with ON/OFF magnet operation

SPECIFICATIONS

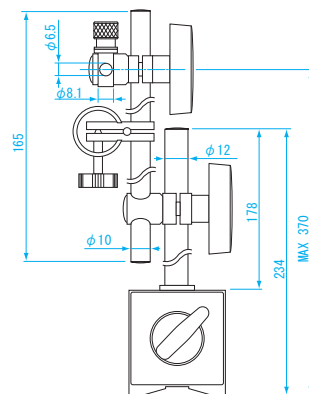
- Magnetic adsorption: **approx. 800N**
- Stem holder: $\phi 6\text{mm} \cdot \phi 8\text{mm}$
- Lug back holder: $\phi 6.5\text{mm} \cdot \phi 8\text{mm}$
- Main post screw: M8×P1.25

Parts for Magnetic Base⇒P270

Fine adjust knob



● DIMENSIONS Units : mm



P366 Magnet Types and Characteristics

| Order No. | Model No. | Base Dimension (mm) | Surface magnetic flux density (mT) | Weight |
|-----------|-----------|---------------------|------------------------------------|--------|
| 012871 | SB-6B | 50×60×55 | Max. 100 | 1.5kg |



| | |
|---|---|
| Measuring instruments▶ Dial Gauge P240 ~245 | Measuring instruments▶ Test Indicator P242·P248 ~249 |
| Replacement part▶ Parts for Magnetic Base P270 | Rust prevention▶ Zerust Film for Steel P380 |



DIAL GAUGE

DIAL INDICATOR

THICKNESS GAUGE

BORE GAUGE

CALIPER GAUGE

HARDNESS-TENSION-FILM THICKNESS

MAGNETIC BASE