

Vision Measuring Systems

Vision measuring systems for multipurpose use

QV Active CNC Vision Measuring System



MeasurLink® ENABLED
Data Management Software by Mitutoyo

- Cost effective, multifunction, CNC Vision Measuring System.
- Usability has been improved by adopting a color camera and 8-step zoom optics.
- A touch-probe model can seamlessly perform non-contact and contact measurement.
- The zoom ratio of 7X (14X at maximum by changing the fixed-magnification objective lens) enables a wide range of inspection from wide view measurement at low magnification to micro-measurement at high magnification.
- The 74 mm maximum working distance (1X optional objective) promotes safe working by reducing the risk of collision, and allows greater freedom in fixture design.



QV Active 404

From wide view measurement to micro-measurement

Optical magnification	0.5X	0.65X	0.75X	0.85X	0.98X	1X	1.28X	1.3X	1.5X	1.7X	2X	2.25X	2.5X	3X	3.5X	3.75X	4X	5X	5.25X	7X
View field Horizontal (H) (mm)	13.60	10.46	9.07	8.00	6.94	6.80	5.31	5.23	4.53	4.00	3.40	3.02	2.72	2.27	1.94	1.81	1.70	1.36	1.30	0.97
View field Vertical (V) (mm)	10.80	8.31	7.20	6.35	5.51	5.40	4.22	4.15	3.60	3.18	2.70	2.40	2.16	1.80	1.54	1.44	1.35	1.08	1.03	0.77
Total magnification (on the monitor)	13.20	17.10	19.80	22.40	25.80	26.40	33.70	34.30	39.50	44.80	52.70	59.30	65.90	79.10	92.30	98.90	105.50	131.80	138.40	184.50
Objective lens	1X objective (optional) Working distance 74 mm																			
Objective lens	1.5X objective (standard accessory) Working distance 42 mm																			
Objective lens	2X objective (optional) Working distance 42 mm																			

Note: The total magnification indicates the magnification on the monitor when the size of the **QVPAK** video window is 178.8×143.0 mm (default).

SPECIFICATIONS

Model No.	QV Active 202	QV Active 404
Type	Standard model	Standard model
Measuring range (X×Y×Z)	250×200×150 mm (250×200×118 mm: when 1X objective is used)	400×400×200 mm (400×400×168 mm: when 1X objective is used)
Observation unit	Zoom unit (8 positions)	
Imaging device	Color CMOS camera	
Vision measuring accuracy*	E _{1x} , E _{1y}	(2 + 3L/1000) μm
	E _{1z}	(3 + 5L/1000) μm
	E ₂	(2.5 + 4L/1000) μm
	Accuracy guaranteed with optics specified	Objective: 1.5X, Optical magnification: 5.25X
Touch-trigger probe measuring accuracy*	E _{1x} , E _{1y} , E _{1z}	—
Accuracy guaranteed temperature	20±1 °C	20±1 °C

* Inspected to a Mitutoyo standard. L=length between two arbitrary points (mm)



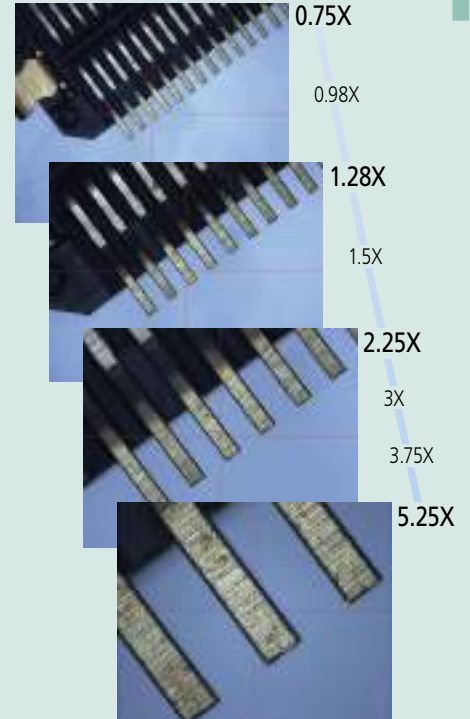
An online system to monitor the operational and mechanical statuses of measuring machines. This allows you to grasp the state of a process flow from the operational status of measuring machines within a production process.



Products equipped with the measurement data output function can be connected to the measurement data network system MeasurLink® (refer to page A-25 for details).



An inspection certificate is supplied as standard. Refer to page U-9 for details.



Refer to the **QUICK VISION Active Series Brochure (E14022)** for more details.